

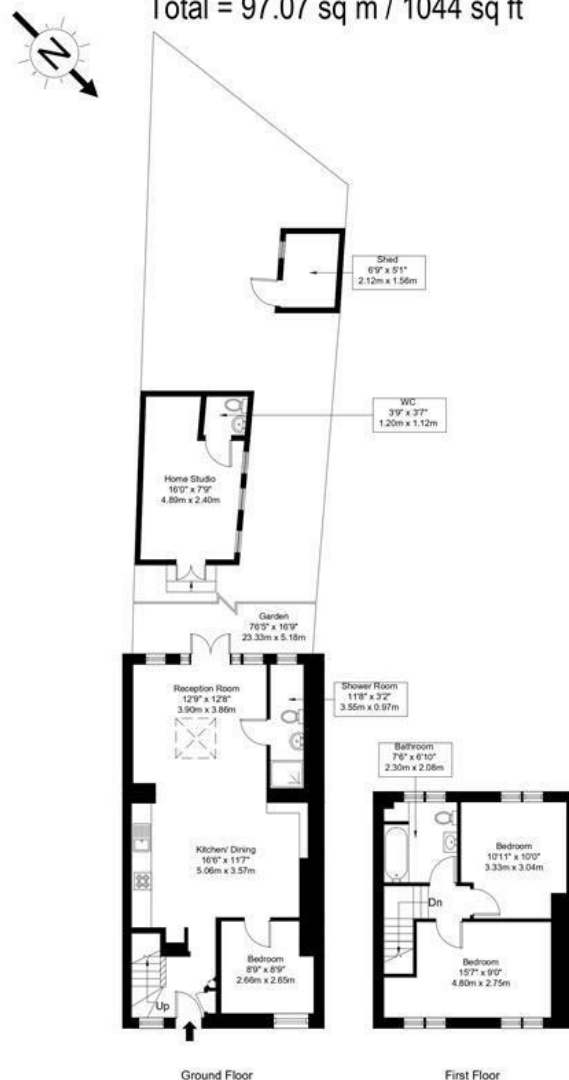
Greenstead Gardens, SW15 5AJ

Approx Gross Internal Area = 80.56 sq m / 867 sq ft

Home Studio = 13.22 sq m / 142 sq ft

Shed = 3.29 sq m / 35 sq ft

Total = 97.07 sq m / 1044 sq ft



Ref :

Copyright **BLEU PLAN**

The Floor plan is not to scale and measurements and areas shown are approximate and therefore should be used for illustrative purposes only. The plan has been prepared in accordance with the RICS code of Measuring Practice and whilst we have confidence in the information produced it must not be relied on. Maximum lengths and widths are represented on the floor plan. If there is any aspect of particular importance, you should carry out or commission your own inspection of the property.
Copyright © BleuPlan

DISCLAIMER•These particulars are intended to give a fair and substantially correct overall description for the guidance of intending purchasers and do not constitute an offer or part of a contract. Prospective purchasers and/or lessees ought to seek their own professional advice.
•All descriptions, dimensions, areas, references to condition and necessary permissions for use and occupation and other details are given in good faith and are believed to be correct, but any intending purchasers should not rely on them as statements or representations of fact, but must satisfy themselves by inspection or otherwise as to the correctness of each of them.
•All measurements are approximate.



Greenstead Gardens, Putney, SW15

A stunning Three bedroom (1,009 SQ FT) terraced, freehold house located on this quiet residential road in the Dover House conservation area. The ground floor accommodation comprises an open plan kitchen/dining/reception room with doors leading to a 76 FT private garden, a separate study/3rd bedroom and shower room. Upstairs there are two double bedrooms, family bathroom with shower over the bath with access to a partially boarded loft. The house further benefits from a separate home studio, complete with heating, electricity and WC. Greenstead Gardens is a quiet residential road close to the open spaces of Putney Heath, yet moments from a bus route heading into and out of Putney. This property is being sold chain free and a virtual 360 tour is available.



- 1,009 SQ FT
- 76 FT PRIVATE GARDEN
- THREE BEDROOMS
- OPEN PLAN KITCHEN/RECEPTION
- CHAIN FREE
- FREEHOLD TERRACED HOUSE
- HOME STUDIO
- TWO BATHROOMS
- PARTIALLY BOARDED LOFT
- EPC RATING: C

Guide Price
£765,000
Available

